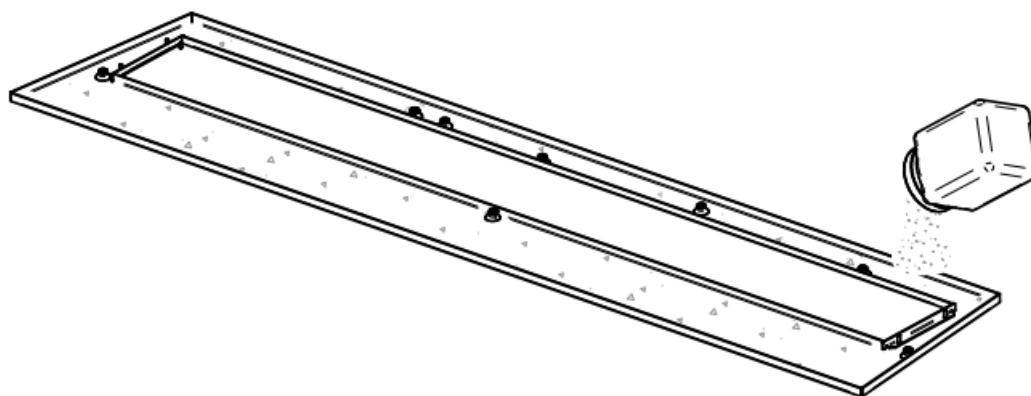


# *Valcourt*

## **SANDBOX**

### **AC04371**

## **INSTALLATION INSTRUCTIONS**



ENGLISH

**WARNING : THIS OPTION IS NOT COMPATIBLE WITH THE VARIABLE HALOGEN LIGHTING KIT (AC04336)**

**WARNING : IF THE SANDBOX OPTION IS PAIRED WITH A LOG KIT (AC04334, AC04343), THE FOLLOWING INSTRUCTIONS ARE TO BE USED OVER THE ONE OF THE LOG KIT.**

## SANDBOX INSTALLATION

### WARNING



**Sharp edges! To avoid injuries, wear safety gloves to install the sandbox**

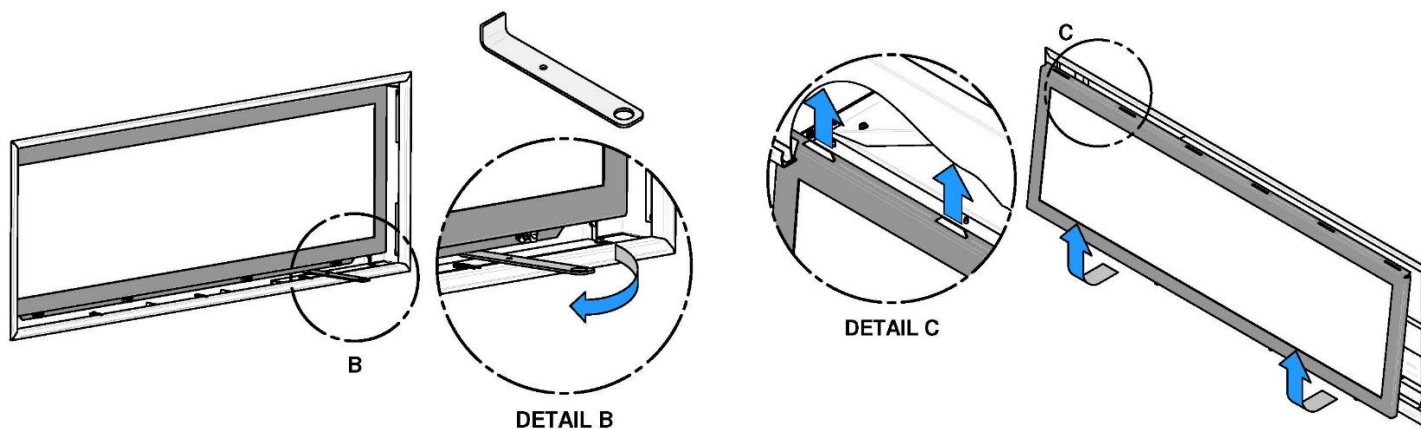
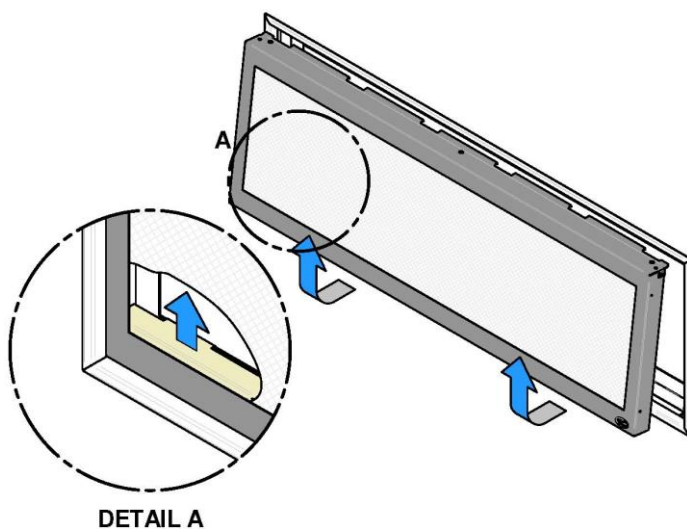
### Carton Contents :

- Sandbox
- Sand jar
- Screws (8x)
- Self Drilling Screw

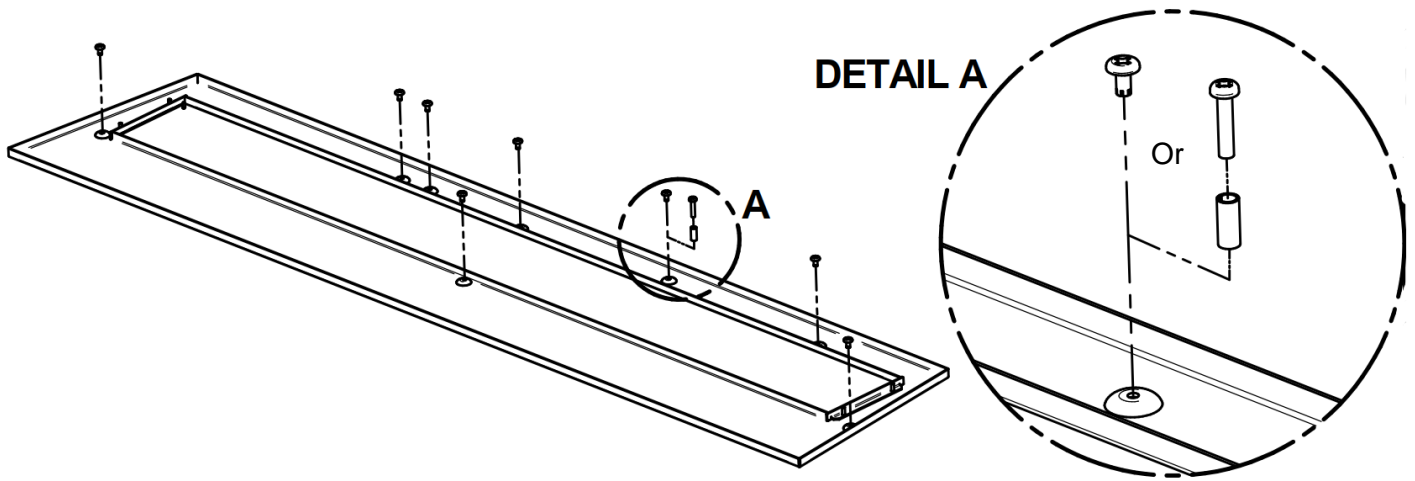
### Tools required

- Gloves
- Eye Protection
- Phillips screwdriver
- 5/16" hex drive screwdriver

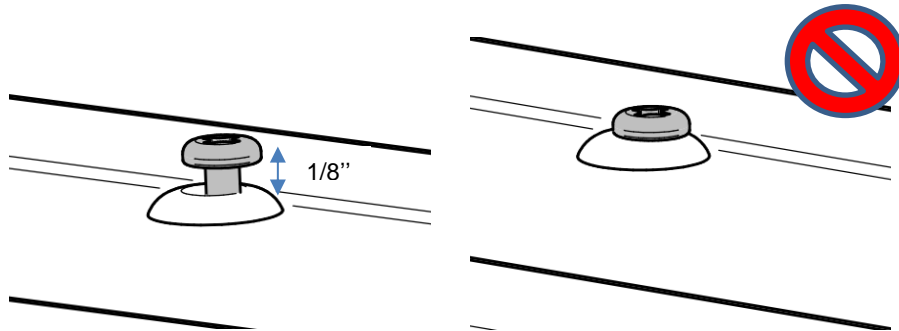
1. Carefully unpack the sandbox and sand jar. Verify that all components are included and inspect for hidden damages prior to installation
2. Remove the Invisimesh barrier and the glass door assemblies as per details **A**, **B** and **C** prior to sandbox installation.
3. Remove decorative media and log set. **If applicable, remove log positioning pins (screws and spacers) from hearth and burner cover.**



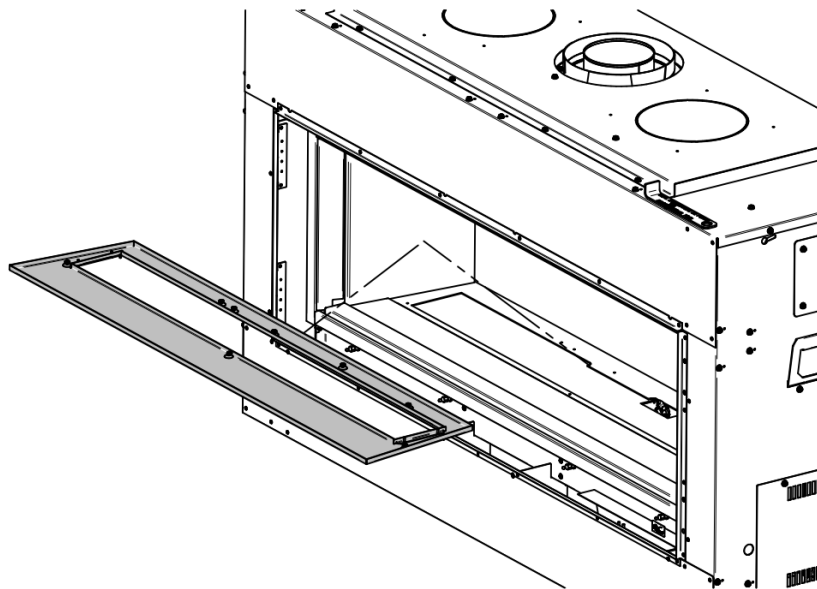
4. Tighten the small screws (8x) into the embossed surface. **WARNING:** If the sandbox is paired with a log set kit (AC04334 or AC04343), use the long screws and spacers provided with the log set kit. See DETAIL A:



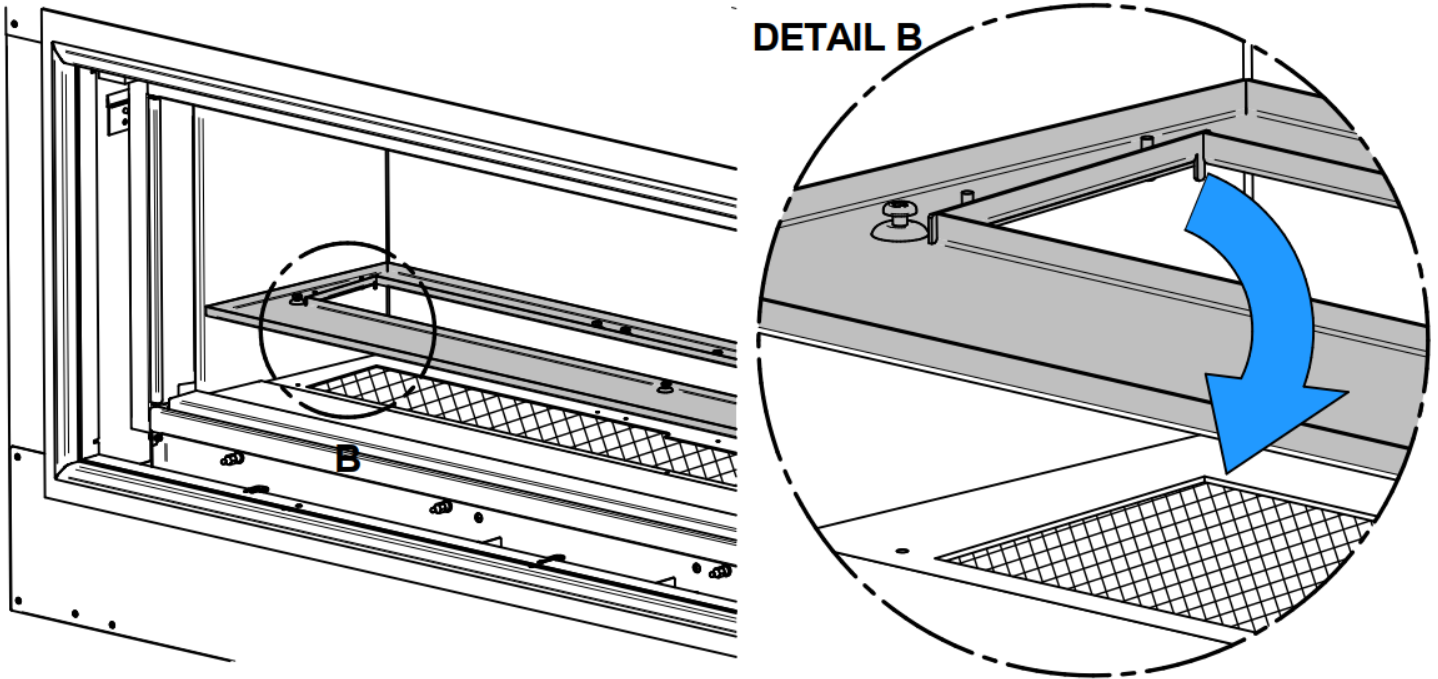
5. **WARNING:** Do not tighten the screws all the way. Keep a space of 1/8 in (3 mm) between the head of the screw and the embossed metal.



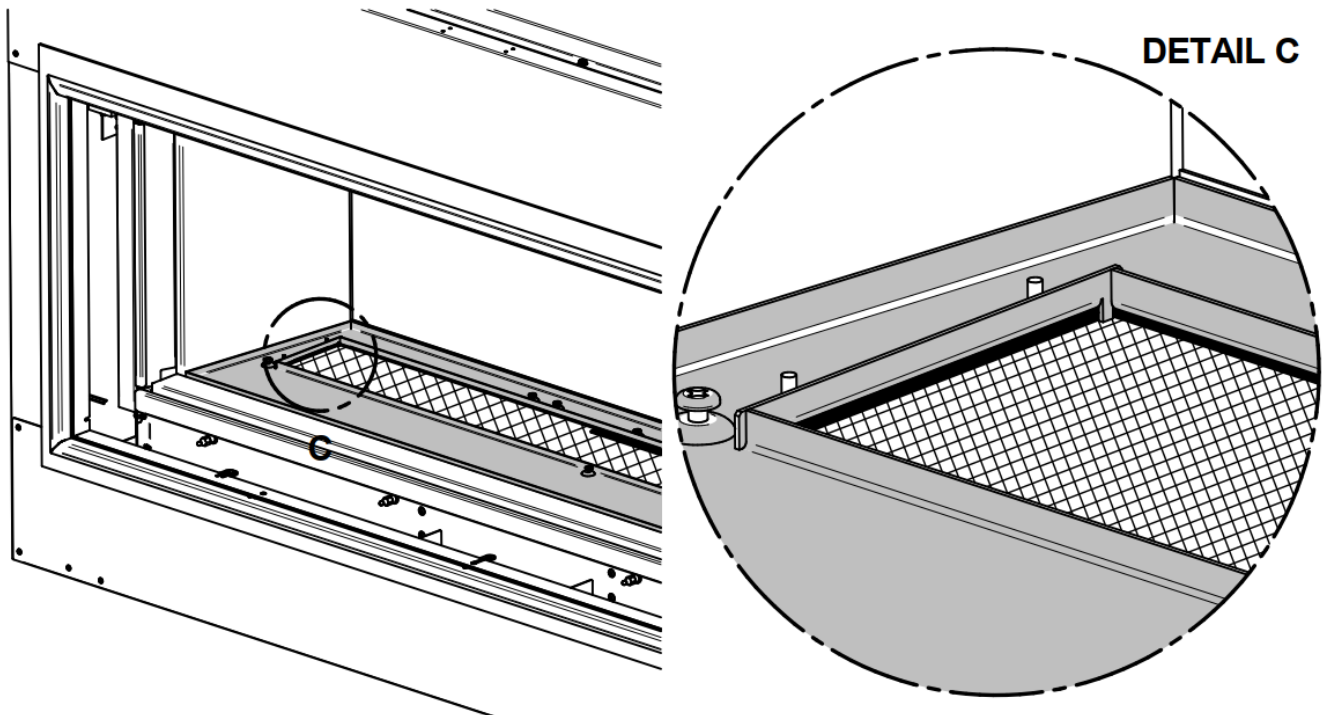
6. Place the sandbox in the heater. The sandbox opening should match the burner opening.



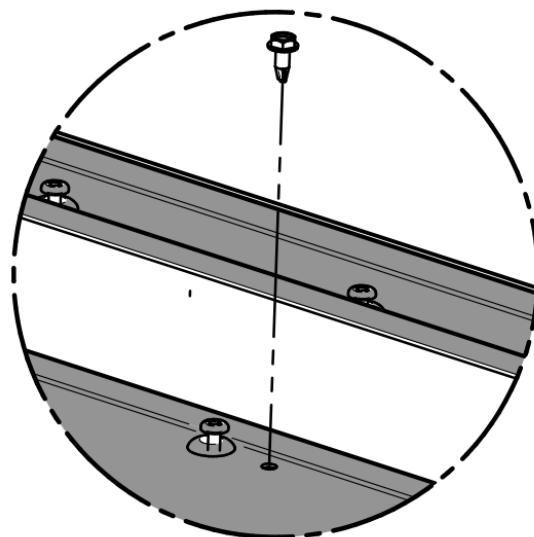
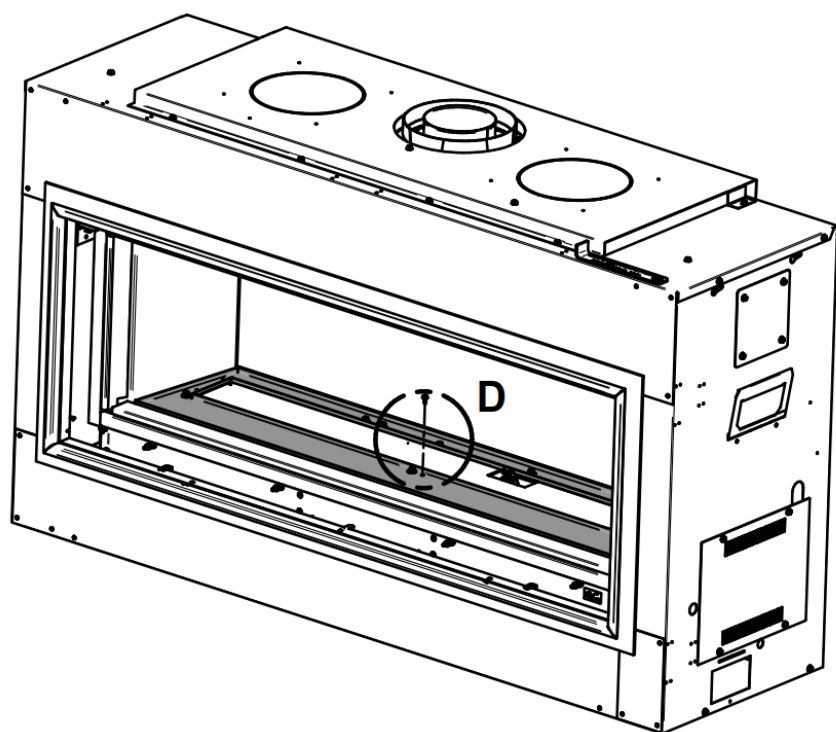
7. Insert the four tabs located at each corner of the sandbox opening into the burner opening to precisely position the sandbox on the burner cover. See DETAIL B:



8. Make sure that every tab are in the burner opening. See DETAIL C:

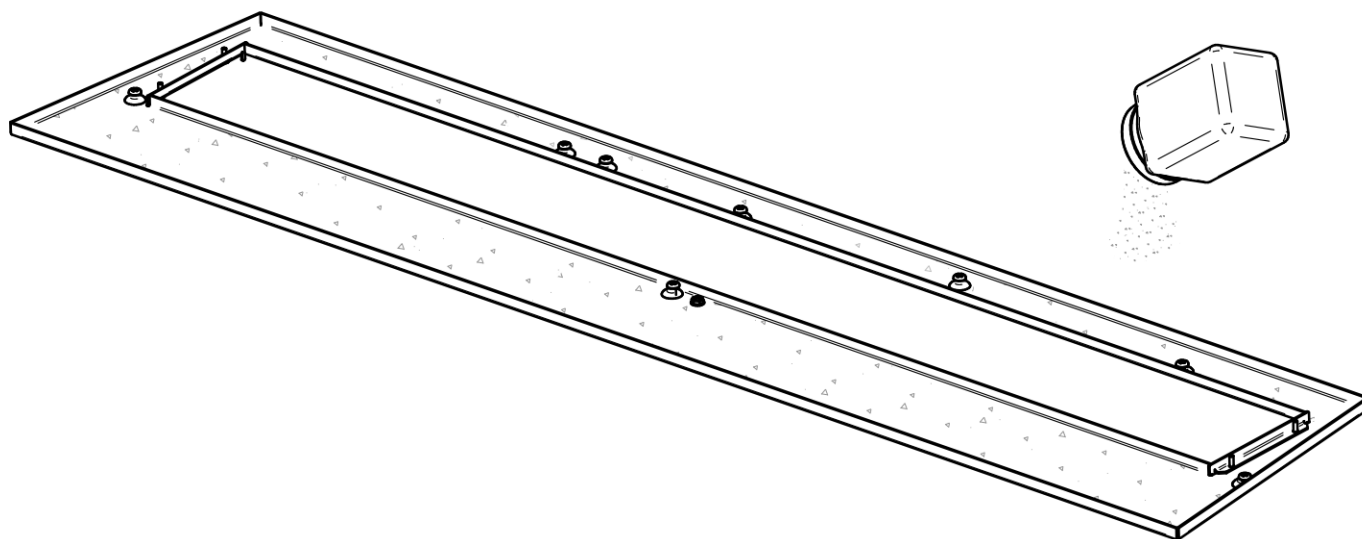


9. Screw with the self drilling screw the plate in Detail D



**DETAIL D**

10. Pour the sand evenly in the sandbox

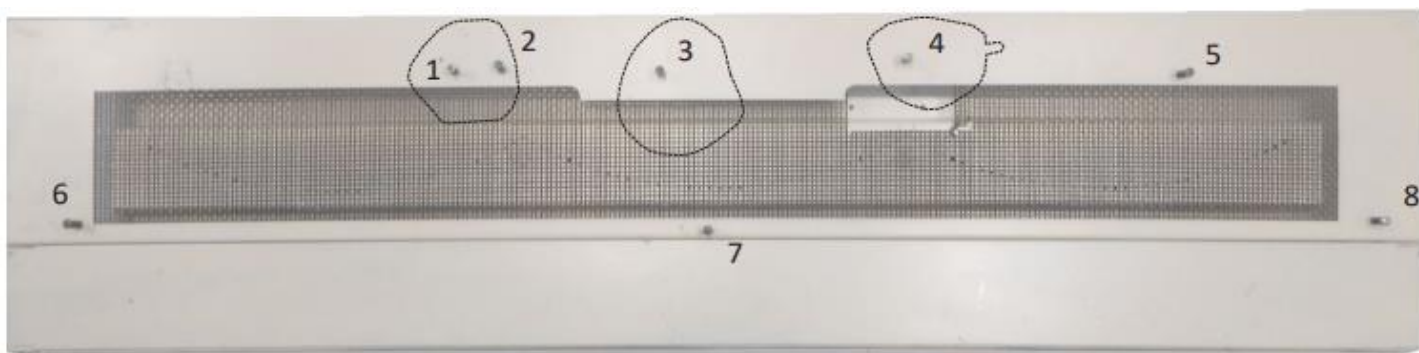
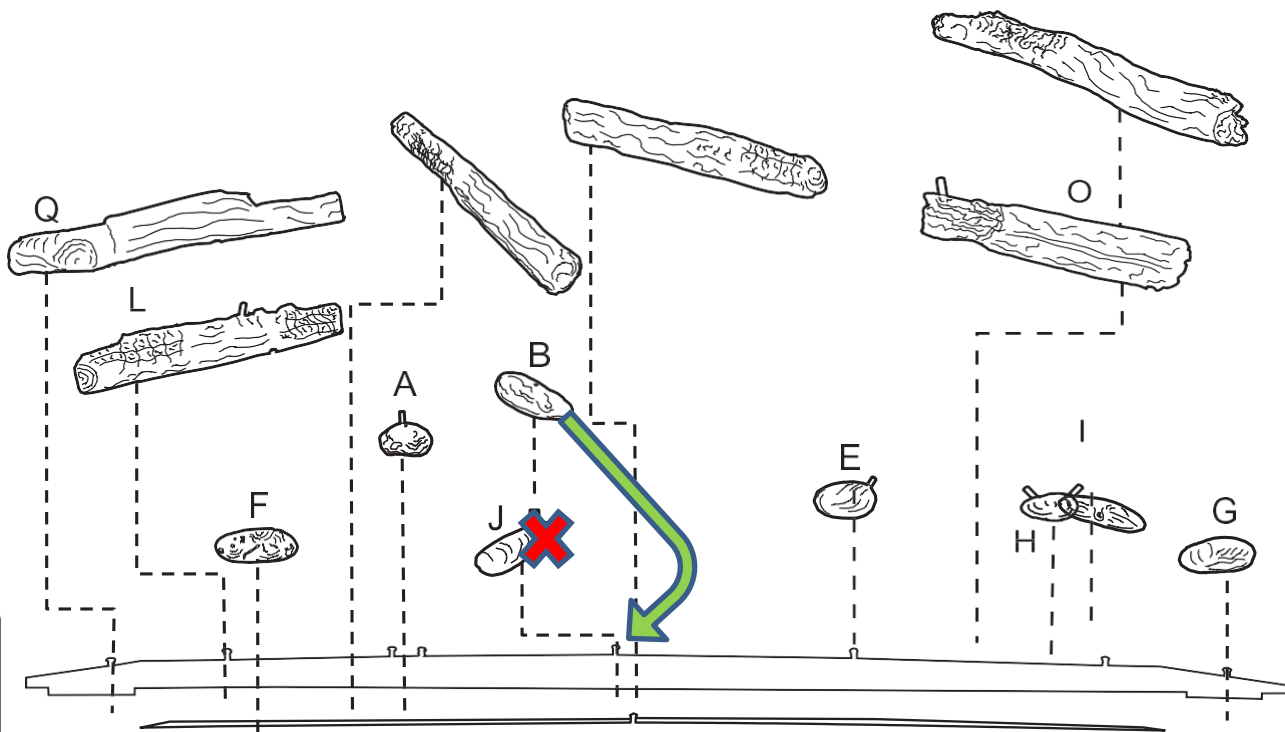


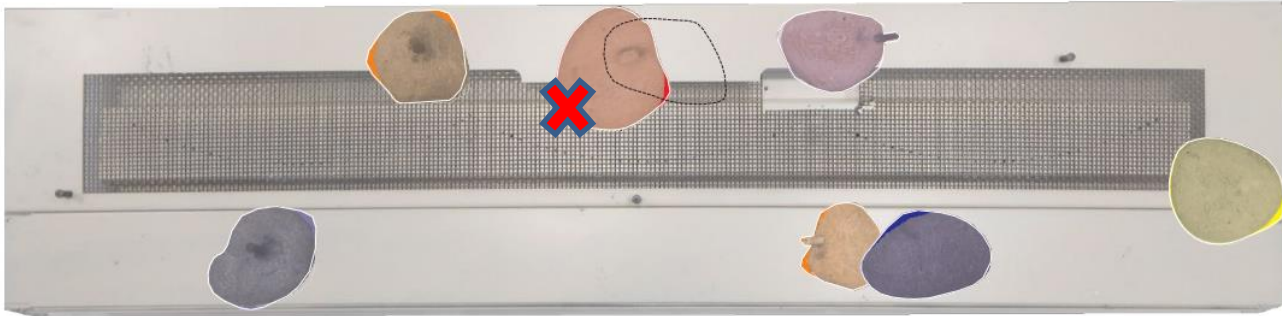
11. Put the crushed glass back onto the burner.



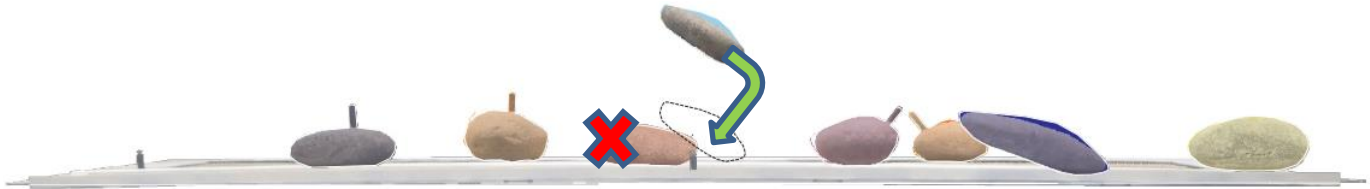
## INSTALLATION OF LOG KIT (AC04334 or AC04343)

12. Follow the log kit installation instructions, except for the following instructions:
13. **WARNING:** Do not put in place the « J » rock on support « 3 ». **Discard "J" rock.**
14. Put « B » rock directly on support « 3 ».





TOP VIEW



FRONT VIEW

### INSTALLATION OF RIVER ROCK KIT (AC04346)

1. Assure yourself that the crushed glass is on the burner
2. Position the river rocks on the sand or around. **WARNING** : Do not put rocks **on the burner** or **overhanging the burner**.

This document is available for free download on the manufacturer's website. It is a copyrighted document. Resale is strictly prohibited. The manufacturer may update this document from time to time and cannot be responsible for problems, injuries, or damages arising out of the use of information contained in any document obtained from unauthorized sources.

*Valcourt*

Stove Builder International inc.  
250, De Copenhague street,  
St-Augustin-de-Desmaures (Québec)  
Canada  
G3A 2H3  
418-908-8002  
[www.sbi-international.com](http://www.sbi-international.com)