

GAS FIREPLACE

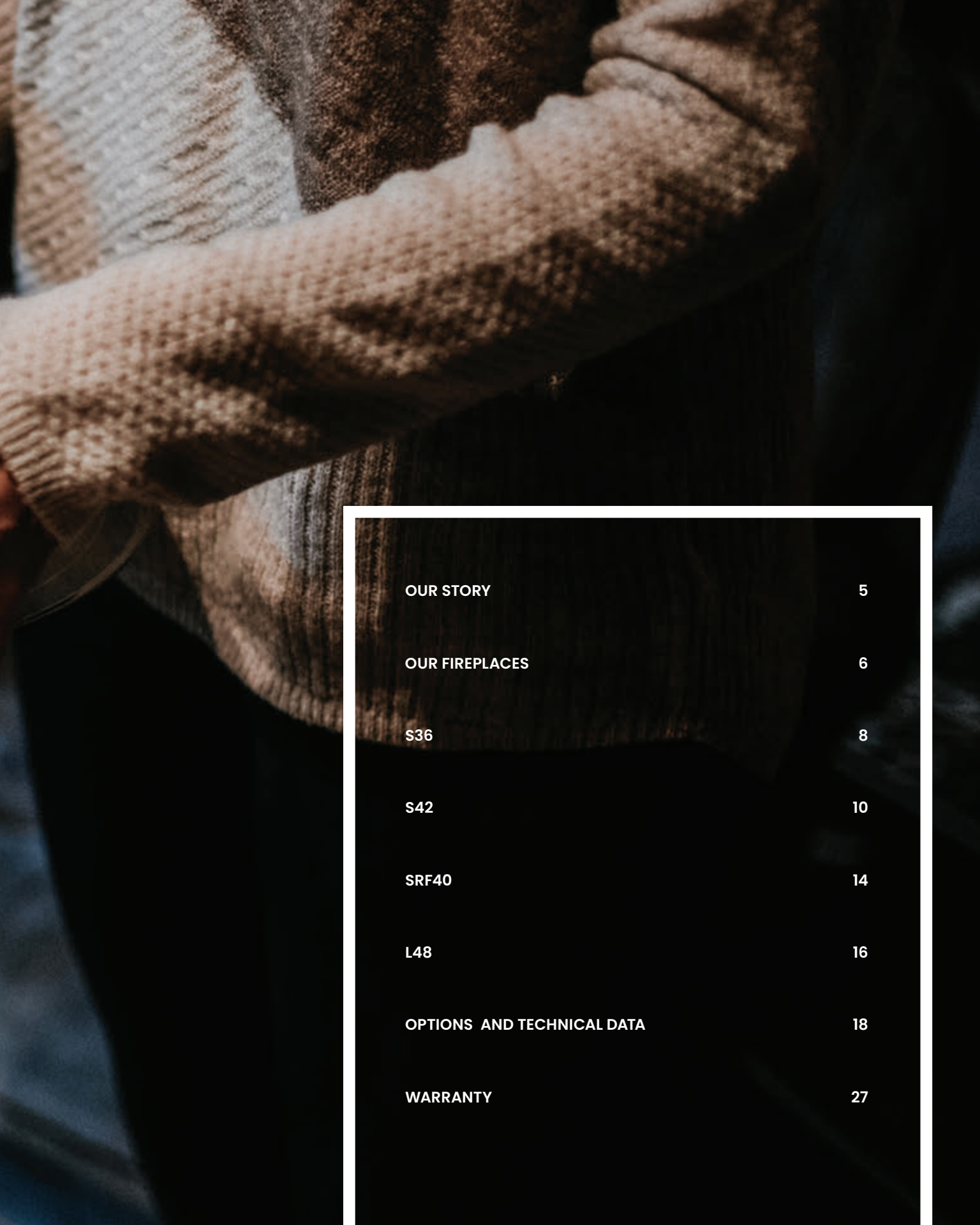
COLLECTION



Valcourt



Information in this brochure is for reference only. Some changes may have been made to the products or technical data after the publication of this brochure. Valcourt reserves the right to modify its products without any obligation on its part.



OUR STORY 5

OUR FIREPLACES 6

S36 8

S42 10

SRF40 14

L48 16

OPTIONS AND TECHNICAL DATA 18

WARRANTY 27



OUR STORY

A tradition of excellence, for more than 60 years.

It all started in 1958, when brothers Auguste and Lucien Valcourt founded the company Valcourt et Frère Enr. Very talented, they first stood out in the manufacture of stairs and wrought iron balconies that adorned the most beautiful homes of Quebec. Guided by his creativity, Auguste began in 1975 the manufacture of custom fireplace doors and slowly relinquished stairs and balconies. Once again, the quality of the products offered allowed the company to stand out in this new adventure.

It was in 1992 that Valcourt discovered its true vocation and manufactured its first wood fireplace: the *Manoir*. Just as popular with consumers as with industry experts, this model has been replicated by multiple manufacturers without ever being matched. A few years later, Valcourt innovated again with its legendary guillotine fireplace, called *Antoinette*. Very first guillotine fireplace on the market, this model is the pioneer of this type and was a major success. Over the years, the fireplace industry has undergone many changes in environmental standards that have imposed increasingly severe restrictions. Living up to its previous successes, Valcourt has brilliantly met these new challenges and launched in 2015 the largest fireplace on the market that meets the EPA requirements.

Guided by endless creativity and the desire to offer the best to its customers, Valcourt continues this tradition of excellence and presents in 2020 a whole new range of gas fireplaces.

Fire, by Valcourt.

A photograph of a street during autumn. The scene is dominated by trees with vibrant yellow and orange foliage. On the right, a row of multi-story brick buildings with ornate architectural details and external staircases is visible. The ground is covered with fallen leaves, and several cars are parked along the left side of the street. The overall atmosphere is warm and cozy, typical of the fall season.

Our Fireplaces





S36

FG00003 (NG)
FG00030 (LP)



Blower
optional

Shaped for a modern lifestyle, the S36 gas fireplace exhibits a minimalist design and fits perfectly into smaller urban spaces or any cozy corner of your life.

The prize

The S36 fireplace's clean face provides a full view of the fire. The flames seem to move in a fluid motion as they disperse from the pan burner below. The realistic log set, accentuated with glowing embers, magically provides the experience of a real wood fire with no hassle. Its narrow depth (18 $\frac{3}{8}$ ") simplifies installation for your new construction or your renovation project.

Make it your Own

As you look through the safety *invimesh*, embellish your fireplace with optional decorative panels, wood logs and lava rock kit that can match a variety of ambiances. Choose black steel or porcelain panels for a clean look, or rustic brick or herringbone panels for a more traditional style. A regular or large finishing trim is available to ensure a flawless finish.

Fitted with a ceramic glass which provides better heat transfer, the S36 is also equipped with a multi-functional remote control which provides intermittent or permanent pilot option, flame height and speed of the optional blower adjustment.



S42

FG00004 (NG)
FG00040 (LP)



Blower
optional

With its striking aesthetics, the S42 gas fireplace provides captivating warmth and enhances the architectural elements of your home.

A Focal-Point

The S42 is a wider version of the S36 and provides more heat to respond judiciously to more spacious spaces. Thanks to its large glass surface, this model offers a magnificent vision of the flames. The flames seem to move in a “fluid” motion as they disperse from the pan burner below. The realistic log set, accentuated with glowing embers, magically provides the experience of a real wood fire without the hassle. The narrow depth (17 7/8”) simplifies installation for new construction or your renovation project.

Make it Your Own

As you look through the safety *invimesh*, embellish your fireplace with optional decorative panels, wood logs and lava rock kit that can match a variety of ambiances. Choose black steel or porcelain panels for a clean look, or rustic brick or herringbone panels for a more traditional style. A regular or large finishing trim is available to ensure a flawless finish.

Fitted with a ceramic glass which provides better heat transfer, the S42 is also equipped with a multi-functional remote control which provides intermittent or permanent pilot option, flame height and speed of the optional blower adjustment.





PROUDLY CANADIAN.

Proudly established in Canada since 1991, Valcourt is a local business for which fireplaces are a true vocation.

Choosing a Valcourt fireplace means prioritizing the quality of the finish and materials, the manufacturing robustness and the durability stemming from undeniable know-how. As a Valcourt customer, you will benefit from local after-sales support that meets your expectations, provided by a network of expert retailers, in collaboration with our experienced team.

As a Canadian manufacturer, it is also important for us to use quality raw materials by sourcing from local partners. More than 90% of our raw materials come from North America, most notably steel.

SRF40

FG00002 (NG)
FG00020 (LP)



Wifi
optional



Gravity air
optional



Forced air
optional



Lighting kit
included



Blower
included

Truly unique, the SRF40 fireplace will transform your space into the privileged place to live unforgettable moments of relaxation.

The authentic fire experience, made simple

Enjoy the beauty of a realistic fire, with all the simplicity of using a gas fireplace. Equipped with two burners, the TruFlame technology of the SRF40 produces real-looking flames that dance and wrap around the hand-painted ceramic fiber logs. Embellished with an ember bed, the logs are designed to perfectly imitate real wood. Enjoy the comfort and warmth of the fire, at the touch of a button, without ever having to leave your favorite seat.

Luxury as you imagine it

The SRF40 adds a touch of elegance and sophistication to your living space. Complete your fireplace with one of the many choices of interior panels, such as brick, glass or stone, as well as a finishing trim that ensures a harmonious transition between your fireplace and the adjacent wall. Also choose the log set with embers and luminous black wool that provides the desired atmosphere; classic wood logs, for a realistic wood fire effect, or driftwood, for a seaside look. Equipped with an ultra-quiet fan, an invisimesh safety screen and an integrated lighting system.

See options on page 22 and technical data on page 25.





L48

FG00001 (NG)
 FG00010 (LP)



Wifi
optional



Gravity air
optional



Forced air
optional



Lighting kit
optional



Blower
included

Larger than life, this gas fireplace is a beautiful addition to any spacious family room to create warmth and luxury.

Relax and enjoy the show

While relaxing from across the room, you can turn on the flame, adjust its intensity, and set the optional light kit to your preference. Included are an ultra-quiet 260 CFM adjustable speed blower and a safety invisimesh screen.

The fireplace of your dreams

Create the perfect atmosphere with the many options available to you. Embellished with river rocks, our strikingly realistic log sets are available in driftwood or birch. Also choose from a multitude of interior panels and crushed glass to match your fireplace to the ambiance and style of your room. A finishing trim, regular, large, or masonry, will give your installation a great look. Opt for the modular lighting system to create a cozy atmosphere even when the flames are out.





Options and Technical Data



Decorative Logs and Rocks



Classic wood logs with black glowing wool

AC04302



Birch logs with black glowing wool

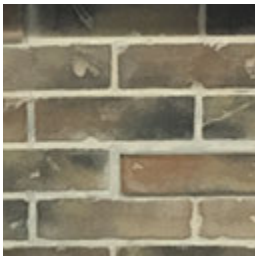
AC04350



Lava rocks

AC04381

Decorative Panels



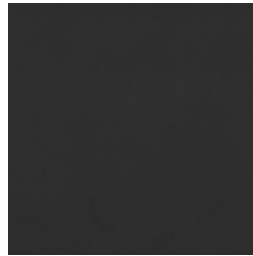
Rustic brick

AC04301



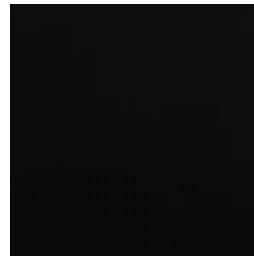
Herringbone brick

AC04351



Black steel

AC04305



Black porcelain

AC04300

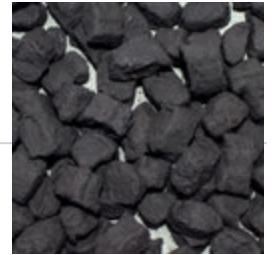
Decorative Logs and Rocks



Classic wood logs with black glowing wool
AC04312



Birch logs with black glowing wool
AC04352



Lava rocks
AC04381

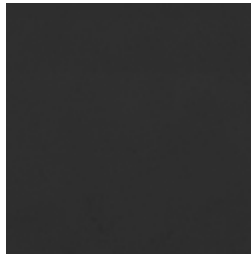
Decorative Panels



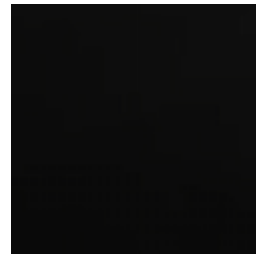
Rustic brick
AC04311



Herringbone brick
AC04353



Black steel
AC04315



Black porcelain
AC04310

Decorative Logs and Rocks



Classic wood logs with ember
and black glowing wool

AC04320



Driftwood with ember and black
glowing wool

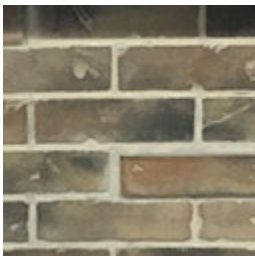
AC04347



Long peak andirons

AC04360

Decorative Panels



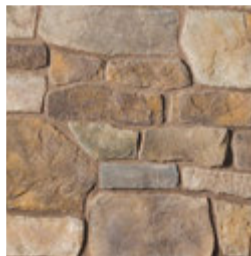
Rustic brick

AC04321



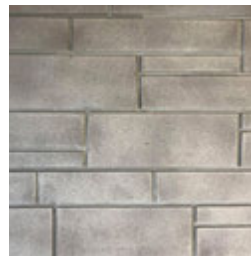
Herringbone brick

AC04326



Old villa

AC04349



Oxford

AC04348



Black reflective
glass

AC04322

Decorative Logs and Rocks



Driftwood and river rock kit

AC04334



Birch logs and river rock kit

AC04343



River rock

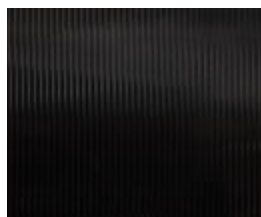
AC04346



Sandbox

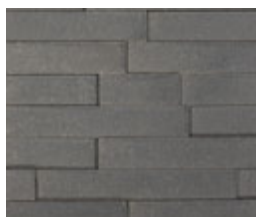
AC04371

Decorative Panels



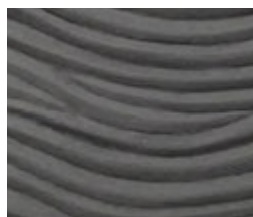
Black grooved glass

AC04358



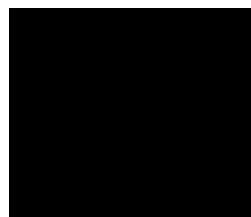
Ledgestone

AC04344



Black wave

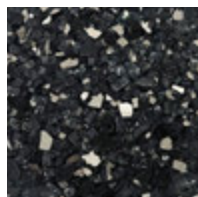
AC04345



Black reflective glass

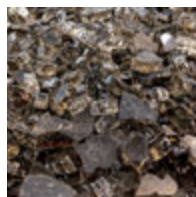
AC04331

Decorative Crushed Glass



Onyx black

AC04355



Dark topaz

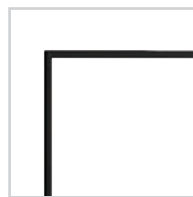
AC04354



Luxury crystal

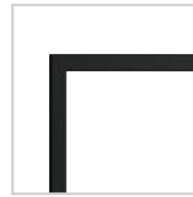
AC04357

Finishing Trims



Regular

AC04332



Large

AC04333



Masonry

AC04359

TECHNICAL DATA

GAS

SIZE AND TYPE OF GLASS

**BTU/H INPUT (MIN/MAX) - PROPANE
NATURAL**

DIRECT VENT

TYPE OF VALVE

**TURN DOWN CAPACITY - PROPANE
NATURAL**

**EFFICIENCY (CSA P4.1-15) - PROPANE
NATURAL**

REQUIRED ACCESSORIES

OPTIONS

S36

Propane (FG00030)
Natural (FG00003)

32" x 28 7/8"
Ceramic

19 000 | 24 000
18 000 | 24 000

4" x 6 5/8" Top Vent
Rigid

Proflame II

20,83 %
25 %

50,49 %
51,02 %

S42

Propane (FG00040)
Natural (FG00004)

38" x 30 7/8"
Ceramic

22 000 | 26 500
21 000 | 28 500

4" x 6 5/8" Top Vent
Rigid

Proflame II

16,98 %
23,32 %

50,74 %
50,43 %

SRF40*

Propane (FG00020)
Natural (FG00002)

35 3/4" x 30 3/8"
Ceramic

16 500 | 45 000
15 000 | 47 500

5" x 8" Top Vent
Rigid

Proflame II

63,3 %
68,4 %

72,78 %
66,37 %

L48

Propane (FG00010)
Natural (FG00001)

48" x 12 7/8"
Ceramic

27 000 | 34 000
25 000 | 38 000

5" x 8" Top Vent
Rigid

Proflame II

20,59 %
34,21 %

60,06 %
61,77 %

1 Classic wood logs with black glowing wool
Birch logs with black glowing wool

Classic wood logs with black glowing wool
Birch logs with black glowing wool

Classic wood logs with embers and black glowing wool
Driftwood with ember and black glowing wool

Driftwood logs and river rocks
Birch logs and river rock kit
River rocks

2 **Panels –**
Black porcelain
Rustic brick
Herringbone brick
Black steel

Panels –
Black porcelain
Rustic brick
Herringbone brick
Black steel

Panels –
Black reflective glass
Rustic brick
Herringbone brick
Old villa
Oxford

Panels –
Black reflective glass
Black grooved glass
Ledgestone
Black wave

3 **Lava rocks**

Lava rocks

Crushed glass –
Luxury crystal
Dark topaz
Black onyx

4

Finishing trim –
Regular
Large
Masonry

Variable speed blower
Finishing trim –
Regular
Large
LP and NG conversion kit

Variable speed blower
Finishing trim –
Regular
Large
LP and NG conversion kit

Finishing trim –
Regular
Large
LP and NG conversion kit
Andirons
Hot air gravity kit
Modern | Traditional
Forced air kit
Wifi Dongle

Hot air gravity kit
Modern | Traditional
Forced air kit
Variable halogen lighting
LP and NG conversion kit
Sandbox
Wifi Dongle

* The SRF40 gas fireplace is equipped with two burners with TruFlame technology.



WARRANTY

Valcourt does not compromise when it comes to excellence in manufacturing its products. This is guaranteed by a highly qualified workforce and state-of-the-art equipment. This tradition of excellence allows us to offer our customers peace of mind, through one of the best warranties in the industry.

LIMITED LIFETIME

Combustion chamber

Heat exchanger

Ceramic glass door

Burner

For more details, visit our website at
www.valcourtinc.com/en/warranty/

PUB362



04-2022
Printed in Canada

WWW.VALCOURTINC.COM

